



# ACCELERATING HEALTH EQUITY

2022 ANNUAL REPORT



# LETTER FROM THE CEO & BOARD PRESIDENT

*In 2022, we had a laser-sharp focus on one thing: to enable patients in need to gain access to high-impact medicines in resource-challenged countries. In pursuit of that goal, we forged deep partnerships, provided access to innovative treatments, expanded diagnostic testing, brought data-driven rigor to our internal systems, and launched programs designed to help patients overcome barriers to access.*

***By the end of 2022 more than 34,000 patients in over 75 of the most resource-constrained countries had received treatment and care, free of cost.***

*While satisfying and deeply humbling, we know there is much work to be done. Our Equity in Action strategic plan, launched in 2021, provided a clear roadmap to accelerate health equity for patients in need around the world.*

*This renewed commitment focused us on three priorities that drove our efforts throughout last year, our 25th anniversary year. So, how did we do in 2022?*

## 1. TREAT MORE PATIENTS

*We are happy to say we reached an additional 3,000 newly diagnosed patients—that is 3,000 families who can smile a little easier now. Our treatment access programs reached patients in Laos and Guinea for the first time, bringing the number of countries where we support patients to 77, and, importantly, grew our Social Determinants of Health programs by 38%, helping patients overcome barriers to treatment access such as transportation costs. In a world of impersonal online interactions, our teams stayed true to our unwavering patient focus through more than 52,000 unique one-on-one personal interactions with patients and caregivers in 2022.*

## 2. AMPLIFY OUR VOICE

*Pat accepted the role of chairing the Access to Oncology Medicines (ATOM) council, a union for the International Cancer Control coalition comprised of deeply committed organizations and individuals intent on accelerating access to cancer treatment. This offers a great opportunity for us to make the patient voices heard by leveraging the combined resources of the council.*

## 3. SUSTAIN OUR WORK

*To sustain our momentum, we strengthened our staff in regions and functions where the needs are most critical. Their innate cultural understanding and enthusiasm never fail to amaze. Our continued strength and impact depend on our sustained partnerships. Reflecting this, we launched the Humanitarian Partnership for Access to Critical Treatment (Humanitarian PACT) for Advanced Breast Cancer. With breast cancer still the leading cause of death for women worldwide, this is not just an excitement for us, but also an important step forward for women in low-resource settings.*

*In closing, we have a clear mission, a core set of beliefs to guide our actions, and a measurable plan to take forward. Our patients keep us inspired and motivated. Our supporters, donors, and friends provide the wind to our sails. We have never been more confident in our ability to accelerate health equity in collaboration with our partners for the many thousands in need who are waiting. We share this annual report to update you on our progress and ask for your continued support.*

*With sincere gratitude and hope for the future,*



**PAT GARCIA-GONZA**  
CEO and Co-Founder

**PAULA BOULTBEE**  
Board President

## TABLE OF CONTENTS

|                     |    |
|---------------------|----|
| 2022 BY THE NUMBERS | 02 |
| TREAT               | 06 |
| AMPLIFY             | 08 |
| SUSTAIN             | 10 |
| FINANCIALS          | 12 |
| DONORS              | 13 |

## OUR MISSION

Our mission is to accelerate health equity. We do this by delivering medication, technology, and services to patients facing cancer and other critical illnesses, focusing our energy on those whom no one else is helping.

## OUR VISION

Our vision is a world where all people can access high-impact medicines, where geography is not destiny, and where everyone can strive for health with dignity and hope.



# 2022 BY THE NUMBERS



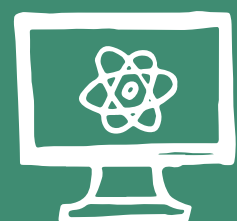
**380**

partner  
medical institutions



**77**

low- and  
middle-income  
countries supported



**4**

GeneXpert diagnostic  
machines donated

**9M+**

daily doses of life extending  
cancer and rare disease  
medication delivered



**91%**

of patients supported,  
continuing from previous years

**8,890**

molecular diagnostic  
tests administered



**52K**

number of one-to-one  
contacts by our team  
with patients

**505**

partner healthcare  
professionals



**73**

global team members  
serving patients



**327**

treatment  
shipments  
delivered through  
our supply chain



**15**

countries receiving  
access to new  
treatments



**3,072**

patients reaching treatment  
for the first time

**34,131**

total number of patients with cancer and  
critical diseases receiving access to treatment

**29,829**

patients treated for  
**Chronic Myeloid Leukemia (CML)**

**3,124**

patients treated for  
**Gastrointestinal Stromal Tumors (GIST)**

**529**

patients treated for  
**Renal Cell Carcinoma (RCC)**

**375**

patients treated for **Philadelphia Chromosome-positive  
Acute Lymphoblastic Leukemia (Ph+ ALL)**

**143**

patients treated for  
**Dermatofibrosarcoma Protuberans (DFSP)**

**71**

patients treated for  
**ALK- and ROS1-positive non-small cell  
Lung Cancer (ALK+ & ROS1+ NSCLC)**

**40**

patients treated for **Hypereosinophilic syndrome  
Chronic Eosinophilic Leukemia (HES/CEL)**

**9**

patients treated for **Myelodysplastic Syndromes/  
Myeloproliferative Disorders (MDS/MPD)**

**6**

patients treated for **Transthyretin Amyloid  
Cardiomyopathy (ATTR-CM)**

**3**

patients treated for  
**Primitive NeuroEctodermal Tumors (pNET)**

**2**

patients treated for  
**Systemic Mastocytosis (SM)**

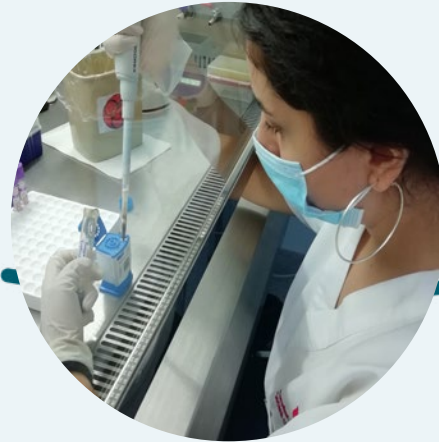


# MEANINGFUL ADVANCEMENTS FOR PATIENTS



We expanded our access programs beyond cancer for the first time, piloting a new program for Transthyretin Amyloid Cardiomyopathy (ATTR-CM), an ultra-rare disease.

Supporters across the globe came together to celebrate the 25th anniversary of The Max Foundation raising \$264,000 to help accelerate equal access to treatment.



We provided nearly 9,000 diagnostic tests, 48% more than the prior year, recognizing the importance of diagnosis and treatment monitoring.



We grew our support to help patients overcome barriers by 38%, expanding initiatives for transportation to treatment centers, tuition grants to keep children of cancer patients in schools, patient meetings to support and educate, and direct assistance via our helpline.



We expanded geographically to provide targeted access where there is none today, opening a treatment access program in Laos and Guinea in December, making significant progress on our core strategic goal.

We launched the Humanitarian PACT for Advanced Breast Cancer to increase global access to treatment, care, and support for women living with advanced breast cancer.



*Dr. Yangchen, Physician from Bhutan, comments that it is not just getting access to innovative medicines she appreciates and admires, but the fact that The Max Foundation works with partner countries to link local doctors to global experts, help improve diagnostic capabilities, and train local teams.*



66

## PHYSICIAN PERSPECTIVE

### Dr. Yangchen from Bhutan

"I've seen that Max looks beyond just donations alone. Because a donation, while it is beneficial for a resource-constrained country like Bhutan, we are looking forward to future collaborations in terms of how Max has been helping other countries in terms of training the manpower, giving access to reagents, testing equipment. So, we look forward to a greater and much more fruitful collaboration in the future. Thank you so much for helping people all over the world. It is an inspiring and noble job that you are doing."



# TREAT MORE PATIENTS

## PROGRESS ON OUR PRIORITIES



We increased patient access to treatment significantly in 2022 in parts of the world that need them the most. More than 3,000 newly diagnosed patients received treatment at no cost across Africa, the Middle East, Eastern Europe, Central Asia, Latin America, and Southeast Asia. We expanded our presence to include Laos and Guinea for the first time, bringing our geographic network to 77 countries with 380 institutions and 505 physicians collaborating with us to help patients.



Studies suggest that conditions in which people are born, grow, work, live, and age, along with the forces that govern their lives, could be significant influencers on their health outcomes. These factors – termed Social Determinants of Health (SDoH) – can be powerful barriers to treatment. In 2022, patient assistance through our five SDoH programs, designed to help patients overcome these barriers, increased by 38%, reaching more than 3,200 people. Our teams logged more than 52,000 unique one-on-one interactions with patients and caregivers throughout the year. We opened a new SDoH program in three new countries, bringing our SDoH patient reach to 16 countries.



Accurate diagnosis and monitoring remains a significant barrier for patients in low-resource countries. Worldwide, we increased our critical diagnostics support by 48% in tests delivered and by 86% in the use of Spot On CML tests through our collaboration with Radich Lab at Fred Hutch Cancer Center.



### PATIENT PERSPECTIVE

“Although some discouraged me from taking on treatment, I am happy that I did and encourage others to take on the treatment and experience first-hand a life-altering journey with the opportunity that The Max Foundation provides.”

**Joanne from Papua New Guinea**



*Joanne and her family. Joanne is now in stable health after being provided with medicines. She says she realizes the “importance of treatment and how it has positively impacted my life.”*



# AMPLIFY OUR VOICE

66

## PATIENT PERSPECTIVE

"I can't find the appropriate words in vocabulary to express my feelings for Max! Imagine someone helping you from far away and you don't even know his/her name, you don't know who he/she is to thank for, he/she continues to support for years, and you continue your life – this is something incredible."

**Murad from Armenia**

*Murad (second from left), a father of three daughters, who has been on treatment for leukemia for 19 years says, "I think life is a fairy tale. I believe in wonders and amazements".*



## PROGRESS ON OUR PRIORITIES



Externally and internally, we advanced closer to our goal of continuing to amplify our patients' voices. Externally, Pat assumed chairmanship for Access to Oncology Medicines Coalition (ATOM) Council, a global partnership sponsored by the Union for International Cancer Control, that brings together 40 leading organizations with the single shared goal of improving access to essential cancer medicines in lower-to middle income countries.



Internally, we launched a new communications department headed by a Vice President designed notably to solidify our organizational outreach, strengthen our presence across key channels, and provide a consistent voice to our multiple stakeholders as we move beyond access to medicine to include Health Systems Strengthening and Social Determinants of Health (SDoH) initiatives.



# SUSTAIN OUR WORK THROUGH ROBUST PARTNERSHIPS

## PROGRESS ON OUR PRIORITIES



Looking ahead to building and sustaining our momentum, we grew the strength of our organization through selective hires in much-needed regions and functions. Our diverse global team are conversant in nearly 40 languages, giving them unique local cultural relevance, strength, and influence to help advance patient needs at the country level.



Reflecting our approach to accelerating health equity through strategic partnerships, we launched Humanitarian Partnership for Access to Critical Treatment (Humanitarian PACT) to provide access to treatment for HR positive/HER2 negative advanced breast cancer patients. Founding partners of the Humanitarian PACT for Advanced Breast Cancer include the ABC Global Alliance, the American Society for Clinical Pathology, Cepheid, and Novartis AG. This innovative collaboration is grounded in a shared commitment to increase global access to treatment for people living with cancer.



66

### PHYSICIAN PERSPECTIVE

"In 1997, I entered the medical faculty of the Azerbaijan Medical University and have participated in writing a guideline for patients with leukemia and currently involved in writing a Guideline on Treatment of Follicular Lymphoma for physicians. I have also run patient education for leukemia patients several times. I want to thank The Max Foundation for giving me the chance to work with innovative medicines, to give incurable patients a chance to survive, to give hope and equity in health."

**Dr. Abbasova, physician from Azerbaijan**



*"Becoming a doctor is not only about diagnosing correctly or prescribing effective medicine for treatment; it is about healing by understanding, talking, making patients feel strong and recovering".*

- Dr. Oksana Abbasova



# REVENUE & EXPENSES

FOR THE YEAR ENDING JUNE 30, 2022

## REVENUE

|                                       |           |                    |
|---------------------------------------|-----------|--------------------|
| In-kind pharmaceutical contributions* | \$        | 307,241,383        |
| Contributions, grants, & sponsorships | \$        | 11,539,837         |
| Diagnostic program revenue            | \$        | 317,805            |
| Other Income                          | \$        | 4,252              |
| <b>Total</b>                          | <b>\$</b> | <b>319,103,277</b> |

## EXPENSES

|                               |           |                    |
|-------------------------------|-----------|--------------------|
| Program expenses              | \$        | 7,844,916          |
| Program in-kind expenses      | \$        | 365,352,278        |
| Management & general expenses | \$        | 1,861,527          |
| Fundraising expenses          | \$        | 691,527            |
| <b>Total</b>                  | <b>\$</b> | <b>375,750,248</b> |

*\*The Organization recognizes in-kind contributions consisting of pharmaceuticals, medical devices, and related products. These goods are recorded as inventory and revenue at fair value at the time received and as a reduction to inventory and program expense when the goods are distributed. Pharmaceutical inventory is released using a specific identification method based on expiration date and is reviewed at least annually for impairment. Pharmaceutical inventory is disposed and written off as obsolete when it is determined the pharmaceutical cannot be imported into a specific country of destination with shelf-life sufficient to comply with local importation regulations and the Organization's own guidelines.*

# DONORS & SUPPORTERS

Your invaluable support allows people facing cancer around the world to live with dignity and hope. Without your generosity and support, we will not achieve our ambitious goals to reach more patients in need. Together, we can overcome inequities in health outcomes and provide the vital medicines to patients no matter where they live. Thank you for joining our mission to accelerate health equity.

## HUMANITARIAN PACT PARTNERS

|   |                                    |             |
|---|------------------------------------|-------------|
| ABC Global Alliance                     | Cepheid                            | Pfizer Inc. |
| American Society for Clinical Pathology | Incyte Corporation                 | Takeda      |
| Bristol Myers Squibb                    | Novartis AG                        |             |
|   | <i>Pioneer in Treatment Access</i> |             |

## CORPORATE PARTNERS

|  |                               |                                |
|--|-------------------------------|--------------------------------|
| AA Pharmacy                                | F5                            | Mercer Island Rotary Club      |
| Armenian Missionary Association of America | Fearey                        | Occidental Lodge #72 F. & A.M. |
| Auburn Rotary Club                         | Federal Way Rotary Club       | Redmond Rotary Club            |
| Bank of America                            | Fred Hutchinson Cancer Center | Roche                          |
| BD   | GenePath Diagnostics          | Rotary District 5030           |
| Bellevue Breakfast Rotary Club             | GRAIL                         | Seagen                         |
| Bellevue Rotary Club                       | Heavyocity Music              | Shoreline Rotary Club          |
| Bourne Capital Partners, LLC               | IHME                          | Suquamish Tribe                |
| Bristol Myers Squibb Foundation            | Issaquah Rotary Club          | Tanner Pharma Group            |
| Copiers Northwest                          | Kent Rotary Club              |                                |
|  | Lake Union Rotary Club        |                                |

## INDIVIDUAL DONORS

|                                    |                       |                            |
|------------------------------------|-----------------------|----------------------------|
| Oluyemi Ajayi                      | Matt & Kim Benson     | Edward Briercheck          |
| Paul Aliu                          | David Berg            | Randall Broad              |
| Benjamin & Tinya Anderson          | Terri-Ann Betancourt  | Carol Choi                 |
| Alicia Annamalay                   | Dr. Beverly Mitchell  | Brent Christofferson       |
| Julian Atim                        | Josué & Nicole Blanco | Laura Cisar                |
| Ellen Baker                        | Aaron Blank           | Viswa Colluru              |
| Ciandra Barber                     | Phil Boeder           | Wilma Comenat              |
| Liz Barrett                        | Stephanie Bohannan    | Christopher & Jamie Conner |
| Jerry P. Scott, CPA & Odette Batik | Nicole Bond Edwards   | Liza & Geoffrey Cook       |
| Gregory Bell                       | Francis Bouchard      | Eric & Dipti Cox           |
| Cari & Greg Benn                   | Paul & Paula Boulton  | David Craig                |

INDIVIDUAL DONORS CONTINUED

Irina Datikashvili-David  
Ted Davis  
Sonia de Bary Pereda  
Amadou Diarra  
Drs. Jerald Radich & Dorcas Dobie  
Talia Jaide Ni Dufaigh  
Liz Dwyer  
Rolando Valencia & Joyce Egonia  
Patrick Flanagan  
Frank R. Foresta Jr  
Pat Garcia-Gonzalez  
Cristin Gordon-Maclean  
Sarah Casarella & George Gradwohl  
Nancy Grande  
Raiza Ramirez & Gabriel Guerrero  
Sarah Hamilton  
Milt & Jennifer Hansberry  
Lutz Hegemann, MD, PhD  
William Heisel  
Pinky Herrera & John Hibbard  
Tracey Higgins  
Carter D. Hill  
Mika Matsuzaki & Mako Hill  
Dr. Richard Woodman & Kala Hill  
Chris Holt  
Sofia Ibarra  
Jian Irish  
Mariam Izoria  
Lawrence N Shulman, MD  
    & Linda Jacobs PhD, NP  
Julie Jenson  
Patricia Jewell  
Renee Jin  
Eric Johnson  
Elaine Kapjian-Pitt  
Karen M. Kasprzyk  
Patricia Keegan  
John Ketchum  
Ken Kieffer  
Andrew Kim  
Ami King  
Kevin King

Chris Korsmo  
Steve Kradjian  
Susan & Bob Kresek  
Nisith Kumar  
Lindsay Kurs  
Claire LeBuffe  
Siew Gim Lee  
Mark Leggett  
Daniel Lieberman  
Fausto Loberiza  
Albert Lui  
Andrew Lyon  
Curt & Ana Malloy  
Michael and Jennifer Mandola  
Laura Barringer & Guy Maas  
Bryan Murphy-Eustis  
    & Lauren Marcell  
Brian Meenaghan  
William Comenat  
    & Carol Ann Mejdrich  
Arda Melkonian  
Dan Milner  
Nana Minkah  
Kevin & Kathryn Mueller  
Dr. Abd Razak Muhamad  
Tara Mulcahy  
Anne Murray  
Mark & Joan Murray  
Lana Narancic  
Jeanne Neptune  
Alexis Oprea-Gradwohl  
Erin Schwartz & Eric Ozretich  
Rod Padua  
Tiffany S. Patrick  
Patricia Pearce  
Mary Pendergast  
Rob Keel & Anna Paola Pradal  
Elizabeth Prescott, Ph.D.  
Steve Price  
Yinyu Quan  
Gregory Radovich  
Belinda Richardson

Jordan & Kate Rickard  
Linda Rickard  
Karla Robinson  
Gilbert L Rodrigues  
Dr. Carlos Rodriguez-Galindo  
Abby Russo  
Tony & Selene Russo  
Jennifer & Nathan Rynning  
Olga Sala-Torra  
Raquel Sanchez  
Amanda & Josh Sandoz  
Arlene Saryan  
Judith Saryan  
Stephen & Andrea Scalia  
Amanda Schwartz  
James Sherpa  
Maria Pia Ruffilli M.D.  
    & Susan Silbermann  
Pamela Sires  
Andrea Sparrey  
Sierra Stayberg  
Marina Taylor  
Mark Taylor  
Stanley Thomas  
Andrea Towlerton  
Dr. Irving Weissman  
    & Dr. Ann Tuskuamoto-Weissman  
Mike & Carla van der Ven  
Viji & Krishnaswami Venkatesh  
Adam Walkiewicz  
Karen Waln  
Mr. & Mrs. Joseph J. Ward  
Edus & Linda Warren  
Kathie Watson  
Glen Weissman  
Madeline Wettstein  
Jeffrey Wilson  
Murray & Vera Wilson  
Sarah & Jason Wine  
Mabel Woloj  
William & Elizabeth Wrigglesworth  
Andrielle Yost

LEADERSHIP

LEADERSHIP TEAM

**Pat Garcia-Gonzalez**  
Chief Executive Officer  
  
**Wilma Comenat**  
Vice President, Development  
  
**Geoff Cook**  
Vice President, Communications  
  
**Inés García González**  
Region Head for Latin America

**Patti Pearce**  
Chief Financial Officer and  
Vice President, Administration  
  
**Bryan Murphy-Eustis**  
Vice President, Programs  
  
**Mei Ching Ong**  
Region Head for Asia Pacific,  
Eastern Europe & Central Asia

**Catherina Scheepers**  
Region Head for Africa & Middle East  
  
**Viji Venkatesh**  
Region Head for South Asia  
  
**J. Michael Wrigglesworth**  
Senior Director of Program Strategy  
& Data Solutions

BOARD OF DIRECTORS

**Paula Boulton**  
President of the Board  
  
**Pat Garcia-Gonzalez**  
Chief Executive Officer  
  
**Robert Farmer**  
Honorary Board Member  
  
**Susan Jerian, MD**  
Board Member, President  
and Founder, ONCORD, Inc.

**Curt Malloy, JD, MPH**  
Treasurer of the Board,  
Chief Operating Officer at Cancer  
Research and Biostatistics (CRAB)  
  
**Mika Matsuzaki**  
Secretary of the Board,  
Assistant Professor at Johns  
Hopkins Bloomberg School  
of Public Health

**Jerald Radich, MD**  
Professor, Clinical Research  
Division, Fred Hutchinson Cancer  
Research Center  
  
**Mabel Woloj**  
Board Member,  
Principal at MW Consulting

HEMATOLOGY ADVISORS

Jorge E. Cortes, MD  
Brian J. Druker, MD  
Andres Hochhaus, MD  
Timothy Hughes, MD

Michael J. Mauro, MD  
Beverly Mitchell, MD  
Javier Pinilla-Ibarz, MD, PhD  
Jerald Radich, MD

Delphine Rea, MD, PhD  
Gianantonio Rosti, MD  
Neil P. Shah, MD, PhD  
Moshe Talpaz, MD

ONCOLOGY ADVISORS

Fatima Cardoso, MD  
Matias Chacon, MD  
George D. Demetri, MD  
Alexandru Eniu, MD  
Yehoda M. Martei, MD MSCE

Dan Milner, MD  
Peter Reichardt, MD  
Lawrence Shulman, MD  
Jonathan Trent, MD

CARDIOLOGY ADVISOR

| Dr. Juan Pablo Costabel

GLOBAL TEAM

AFRICA & MIDDLE EAST

Faith Afolabi  
Tenaye A. Ashebir  
Perpertual Asiamah  
Mario Borain  
Geraldine Botha  
Nicole Jordaan  
Maxane Kilosho  
Mmamolahlegi Mahopo  
Tresor Mbuyi  
Lucy Mwangi  
Kayinfa Nicole  
Catherina Scheepers  
Vimbai Taruzedzara  
Kafui Vodounou

ASIA PACIFIC, EASTERN EUROPE & CENTRAL ASIA

Nor Aina Abd Rahim  
Mariam Izoria  
Socheatha Jim  
Min Jia Lim  
Nelia Medina  
Nur Fatiha Nabila Mohd Nor  
Nur Izzati Mohd Rodzi  
Mei Ching Ong  
Wirat Sae-Kuai  
Sukhrob Saliev  
Aytan Shirinova  
Tang Thi Thanh Thao  
Chanikan Wongsamai

LATIN AMERICA

Victoria Duhalde  
Melisa Gisele Fazio  
Cynthia Figueroa Guerra  
Ines Garcia Gonzalez  
Mariana Rubi Gonzalez  
Lyat Granati  
Martha Rosario Molina  
Jacqueline Montúfar  
Cristian Neves  
María Julia Sánchez

HEADQUARTERS

Mahmoud Alballah  
Craig Anderson  
Alicia Annamalay  
Mercedes Arteaga  
Wilma Comenat  
Geoff Cook  
Diane Cryder  
Patrick Flanagan  
Pat Garcia-Gonzalez  
Tomara Henderson  
Angel Kaushish  
Emma Kgopa-Chabangu  
Mmamolahlegi Mahopo  
Alexander Laya Martinez  
Emily Muirhead  
Bryan Murphy-Eustis  
Pooja Patil  
Patti Pearce  
Raiza Ramirez  
Sam Reddy  
Abigail Russo  
Jennifer Rynning  
Nicholas Schmidt  
Charmaine Vazquez  
Michael Wrigglesworth  
Andrielle Yost

SOUTH ASIA

Sweta Agrawal  
Ashok Boricha  
Phillip Fernandes  
Santosh Kadam  
Priyanka Kandalgaokar  
Shrutika Kaspale  
Prasad Kothekar  
Dipanwita Maiti  
Azim Mohd  
Ashika Naik  
Beena Narayanan  
Urvashi Negi

Jyotiy Parameshwaran  
Sudha Samineni  
Julie Soundarva  
Shalini Subramanian  
Komal Surve  
Anshika Tandon  
Viji Venkatesh  
Anona Walter



PARTNER INSTITUTIONS

ARGENTINA

Academia Nacional de Medicina  
FUNDALEU  
Hospital Centenario  
Hospital Central  
Hospital Nacional de Clínicas  
Hospital Posadas  
Hospital Ramos Mejía  
Hospital Rossi  
Hospital San Martín  
Private Office Dr. Bibiana Espina  
Private Office Dr. Javier Bordone  
Private Office Dr. Ricardo Aguirre  
Private Office Dr. Victoria Welsh  
Private Office Dr. Virginia Guerrero

ARMENIA

Hematology Center after prof. R.H. Yeolyan

AZERBAIJAN

National Hematology and Transfusiology Center

BAHAMAS

Hematology Oncology Consultants

BELARUS

Minsk Scientific and Practical Center of Surgery, Transplantology and Hematology

BENIN

Centre National Hospitalier Universitaire – Hubert K. MAGA

BHUTAN

Jigme Dorji Wangchuck National Referral Hospital

BOLIVIA

Clínica Los Olivos  
Global Laboratorios  
Hospital de Clínicas Universitario  
Instituto Boliviano de Oncohematología  
Instituto Oncologico del Oriente Boliviano  
Private Office Ricardo Villegas  
Private Office Wendy Cabrera

BRAZIL

Centro de Hematologia e Hemoterapia – Universidade

BURKINA FASO

Centre Hospitalier Universitaire Yalgado Ouedraogo

CAMBODIA

Mercy Medical Center Cambodia

CAMEROON

Hopital General Yaoundé

CHILE

Clínica Icos  
Clínica Las Condes  
Clínica Reñaca  
Fundación Arturo López Pérez  
Hospital Barros Luco  
Hospital Base Puerto Montt  
Hospital Clínico Universidad Católica  
Hospital del Salvador

Hospital Dr. Hernán Henríquez Aravena

Hospital Jj Aguirre

Hospital La Serena

Hospital Naval

Hospital Regional de Antofagasta

Hospital Regional de Concepción

Hospital Regional de Talca

Hospital Regional de Temuco

Hospital Regional de Valdivia

Hospital Roberto del Río

Hospital San Borja Arriarán

Hospital San Juan de Dios

Hospital Sótero del Río

Hospital Van Buren

INCAN

Private Office Dr. Javier Anabalón

COTE D’IVOIRE

CHU de Yopougon

Democratic Republic of Congo

Centre Hospitalier Nganda

DOMINICAN REPUBLIC

Hospital Heriberto Pieter

EAST TIMOR

Bairo Pite Clinic Lanud

ECUADOR

Hospital Metropolitano

SOLCA Núcleo de Quito

EL SALVADOR

Hospital Nacional Rosales

ESTONIA

North Estonian Medical Centre

ETHIOPIA

Tikur Anbessa (Black Lion) Hospital

FIJI

Colonial War Memorial Hospital

GABON

Institut de Cancerologie Angondje

GEORGIA

M.Zodelava Hematology Clinic  
LTD Medinvest Institute of Haematology and Transfusiology

GHANA

KOMFO ANOKYE TEACHING HOSPITAL

Korle-Bu Teaching Hospital

GUATEMALA

Hospital General San Juan de Dios

Hospital Roosevelt

GUINEA

CHU Ignace Deen Conakry/Guinee

HAITI

Zanmi Lasante

HONDURAS

Centro de Cancer Emma R. De Callejas

INDIA

A.M.R.I Hospital

ACHARYA TULSI REGIONAL CANCER TREATMENT AND RESEAR

Action Cancer Hospital

AIIMS Bhubaneswar

Alexis Hospital,

All India Institute of medical Science

All India Institute Of Medical Science (AIIMS)

Amala Hospital

American Oncology Institute

Amrita Institute of Medical Sciences

Ananta Medical College and Research Centre

Antia’s Clinical & Haematology Lab

Apex Wellness Hospital

Apollo Cancer Institutes

Apollo Hospital ( Navi Mumbai)

Apollo Hospitals, Madurai

Apollo Multispecialty Hospital

Apollo Specialty Hospitals (Chennai)

Arogya Multi-Speciality Clinic

Arunodaya Medical Centre

Asirvatham Super Speciality Hospital

Aster Medcity Hospital

Aster MIMS Hospital

Ayush Haemato-Onco Clinic

B. L. Kapoor Super Speciality Hospital

Batra Hospital and Medical Research Center

Bhagwan Mahaveer Cancer Hospital & Research Centre

Bhaktivedanta Hospital & Research Institute

BND Onco Centre

Breach Candy Hospital & Research Centre

Cancer Care Clinic

Cancer Center of America

Cancer Centre Welfare Home & Research Institute (D

Cancer Institute

Cancer Research Centre

Caritas Hospital

Center of Blood Disorders

Chittaranjan National Cancer Institute

CHL-CBCC Cancer Center

ClearMedi Radiant Hospital

Deenanath Mangeshkar Hospital

Dharamsila Cancer Hospital. And Research Center

Dilip Gohokar Clinic

Doctors And Doctors Plaza

Dr. Manish Nema Clinic & Lab

Dr.Kamakshi Memorial Hospital

Eyesrus Ophthalmic/eye hospital

Father Muller Medical College

Fortis Balaji Hospital

Fortis Hospital, Ludhiana

Fortis Memorial Research Institute

G.Kuppuswamy Naidu Memorial

Hospital

Ganju Haematology Clinic and Hospital

Gauhati Medical College

Government Medical College

GSL Trust Cancer Hospital

Gujarat Cancer & Research Institute

GVN Hospital

Haemato-Oncology Care Centre (HOCC)

Harshamitra Super Speciality Hospital

HCG Cancer Centre

HCG Cancer Centre, Jaipur

HCG Cancer Centre, Mumbai

HCG Kalyannagar

HCG Medisurge Hospital

HCG MSR Centre Of Oncology

HCG Panda Curie Cancer Hospital

HealthCare Global Enterprises Ltd

Hematology & Immunology Cell

Hematology Clinic

Holy Spirit Hospital

Homi Bhabha Cancer Hospital

Hope Cancer Institute

Icon Krishi Institute of Medical Sciences Private

Indira Gandhi Co-Operative Hospital

Indira Gandhi Institute of Medical Sciences (IGIMS)

Indo-American Cancer Institute & Research Centre

Indurkar clinic

IVY Hospital

Jaslok Hospital and Research Center

Jaypee Hospital

JIPMER

Jupiter Hospital

K R Hospital

Kailash Hospital

Kane Hospital

Kashyap Nursing Home

Kerala Institute of Medical Sciences

Kidwai Memorial Institute of Oncology

King George’s Medical College

Kolkata Medical College

Kovai Medical Centre And Hospital

Krishna Hospital

Krishna Institute Medical Sciences Ltd

Kumaran Hospitals Pvt. Ltd

L N Cancer Hospital

LH Hiranandani Hospital

Lokmanya Tilak Municipal General Hospital

Lotus Institute of Hemetology and oncology

Mahatma Gandhi Medical College & Hospital

Mahavir Cancer Sansthan

Malabar Cancer Center

Manas Hospital

Manavata Cancer Centre

Mangalore Institute of Oncology

Mangalore Institute of Oncology Udupi, Day Care Centre

Manipal Hospital

Manipal Hospital Yeshwanthpur

Manipal Hospital, Comprehensive Cancer Centre

Manipal Hospital, Vijayawada

Marble City Hospital and Research Centre

Max Super Speciality Hospital

Max Super Speciality Hospital, Ghaziabad

Mayom Hospital

Medanta Cancer Institute

Medicity Hospital

MGM’s Medical College & Hospital

Microdiagnostic

Mittal Hospital

MNJ Hospital

Mohan B Agarwal Clinic

MOHAN DAI OSWAL CANCER HOSPITAL

MS Patel Cancer Center

Mumbai Oncocare Centre

Mumbai Oncocare Centre, Aurangabad

MVR Cancer Center and Research Institute

Naik Super Speciality Hospital

PARTNER INSTITUTIONS, CONTINUED

Nair Hospital  
Narayana Hrudayalaya  
Narayana Superspeciality Hospital  
Narayani Cancer Clinic  
National Cancer Institute  
Netaji Subhas Chandra Bose Cancer Research Institu  
Nil Ratan Sircar Medical College & Hospital (NRSMC&H)  
Nizam`s Institute of Medical Sciences  
NMR Curie Centre of Oncology  
Omega Hospital  
Oncowin Cancer Center  
P. D. Hinduja Hospital and Medical Research Centre  
Paras HMRI Hospital  
Park Nursing Home  
Patel Hospital  
Patna Hematology Clinic  
Post Graduate Institute of Medical Education & Res  
Pragati Hospital  
Prathima Cancer Hospital  
Prince Aly Khan Hospital  
PSRI Hospital & Research Centre  
Punjab Cancer Care & Research Centre  
Quality Care Hospital  
Qure Hematology and Oncology Centre LLP (Dr Urmish Chudgar)  
R.K. Birla Cancer & Res. Center & S.M.Medical Collage  
Raheja Hospital  
Rajagiri Hospital  
Rajendra Institute of Medical Sciences  
Rajiv Gandhi Cancer Institute & Research Ctr.  
Ram Krishna Cancer Care Clinic  
Ravi's American Cancer Care Regional Cancer Centre  
Renova Soumya Cancer Centre  
Ruby Hall Clinic  
S.C.B. Medical College and Hospital  
Safdurjung Hospital

Sahyadri Speciality Hospital  
Sakra World Hospital  
Sancheti Hospital and Cancer Institute  
Sandu Cancer Centre  
Sanguine Hematooncology Clinic  
Sanjay Gandhi Postgraduate Institute of Medical Sc  
Sanjeevani CBCC USA Cancer Hospital  
Santokba Durlabhji Memorial Hospital,  
Saveetha Medical College and Hospital  
SEAROC Cancer Center  
Shatabdi Hospital  
SIMS Hospital  
Sir Ganga Ram Hospital  
SMS Medical College and Hospital  
Sparsh Hospital and Critical Care Pvt. Ltd.  
Sri Aurobindo Cancer Institute of Medical Sciences  
Sri Guru Ram Das Institute of Medical Sciences & Research Centre  
Sri Ramachandra Medical College & Research Centre  
Sri Ramakrishna Institute of Oncology Research  
Srinivasan Rajalakshmi Memorial Hospital  
St. John's Medical College  
Surat Oncology Centre  
Sushrut Hospital & Research Centre  
Taran OncoCare  
Tata Medical Centre  
Tata Memorial Hospital  
United CIIGMA Hospital  
Vadamalayan Hospitals  
Vasantha Memorial Cancer Centre  
Vasundhara cancer clinic  
Vedanta Institute of Medical Sciences  
Vizag Haematology Centre  
VPS Lakeshore Hospital  
VS hospital  
Vyas Cancer Care

Vydehi institute of Medical science and Research center  
Yashoda Clinic  
Yashoda Hospital  
Zydus Hospitals Cancer Centre  
**JAMAICA**  
Cornwall Regional Hospital  
Kingston Public Hospital (NPHL)  
University Hospital Of The West Indies  
**KAZAKHSTAN**  
National Research Oncology Center  
**KENYA**  
Coast General Teaching & Referral Hospital  
Jaramogi Oginga Odinga Teaching & Referral Hospital  
Moi Teaching & Referral Hospital  
Nakuru Level 5 Hospital  
The Nairobi Hospital  
**KYRGYZSTAN**  
National Oncology and Hematology Center  
**LAOS**  
Mittaphab Hospital  
**LATVIA**  
Riga East University Hospital  
**LITHUANIA**  
Hematology, Oncology and Transfusion Medicine Center, Vilnius University Hospital  
Santaros Klinikos  
**MACEDONIA**  
University Clinic for Hematology-Skopje  
**MADAGASCAR**  
Service d'Oncologie C.H.U – H.J.R.A  
**MALAWI**  
College of Medicine & Queen Elizabeth Central Hosp  
**MALI**  
Service d'hématologie oncologie médicale  
Mauritius  
Victoria Hospital Candos  
**MEXICO**  
Hospital Angeles del Pedregal  
Hospital Central de San Luis Potosí - Dr. Ignacio M

Hospital General de Mexico  
Hospital General de Occidente, Secretaria de Salud  
Hospital Universitario de Nuevo León - Dr. José Ele  
Instituto Nacional de Cancerologia (INCAN)  
Instituto Nacional de Ciencias Médicas y Nutrición  
Unidad de Hematología y Transfusión  
Unidad de Inmuno-hematología  
**MOLDOVA**  
Institute of Oncology  
**MONGOLIA**  
The First Central Hospital of Mongolia  
**MOROCCO**  
AGIR  
**MOZAMBIQUE**  
Hospital Central de Maputo  
**NEPAL**  
B.P. Koirala Memorial Hospital  
Patan Hospital  
**NICARAGUA**  
Hospital Roberto Calderon Gutierrez  
**NIGER**  
Hôpital National de Niamey  
**NIGERIA**  
Obafemi Awolowo University Teaching Hospitals Comp  
**PAPUA NEW GUINEA**  
Nazarene Hospital  
**PARAGUAY**  
Hospital de Clínicas  
**PERU**  
Clínica San Felipe  
Hospital Regional Honorio Delgado  
Instituto Nacional de Enfermedades Neoplasicas  
**PHILIPPINES**  
Asian Hospital and Medical Center  
BMSC Medical Imaging Center, O and E Bldg.  
Cebu Doctor's Hospital  
Chinese General Hospital  
Chong Hua Hospital  
Divine Mercy Wellness Center

Hospital of the Sacred Heart  
Lung Center of the Philippines  
Makati Medical Center  
Medical Arts Bldg. Iloilo Mission Hospital  
Medical Arts Bldg., Riverside Medical Center  
Medical Center Manila  
National Kidney and Transplant Institute  
Pediaware Clinic  
Perpetual Succor Hospital  
Philippine General Hospital  
San Pedro Hospital of Davao City  
Sheila P. Pingoy Memorial Cancer and Blood Disease  
St. Luke's Medical Center  
University of Santo Tomas Hospital  
Veterans Memorial Medical Center  
Victor R. Potenciano Medical Center  
ZAEC Community Medical Center San Jose  
Zambales Doctors' Clinics  
**REPUBLIC OF CONGO**  
Centre Hospitalier et Universitaire de Brazzaville  
**REPUBLIC OF SERBIA**  
University Clinical Center of Serbia  
**RWANDA**  
Partners In Health/ Inshuti Mu Buzima  
Rwanda Military Hospital  
**SAINT LUCIA**  
Victoria Hospital  
**SENEGAL**  
Hospital Dalal Jamm  
**SEYCHELLES**  
Seychelles Hospital  
**SIERRA LEONE**  
Connaught Teaching Hospital, Freetown  
**SOLOMON ISLANDS**  
National Referral Hospital  
**SRI LANKA**  
National Cancer Hospital, Maharagama  
Nawaloka Private Hospital

North Colombo Teaching Hospital Ragama  
Oasis Hospital, Colombo  
Provincial General Hospital  
Teaching Hospital, Kandy  
**SUDAN**  
The Radiation and Isotope Centre (RICK) - Khartoum  
**SURINAM**  
University Hospital Paramaribo, AZP  
**TAJIKISTAN**  
National Medical Centre of the Republic of Tajikistan "Shifobakhsh"  
**TANZANIA**  
Kilimanjaro Christian Medical Center  
Ocean Road Cancer Institute  
**TOGO**  
Campus Teaching Hospital of Lome  
**TUNISIA**  
Hôpital Abderrahmane Mami de Pneumophistologie  
Hopital Aziza Othmana of Tunis  
**UGANDA**  
JOINT CLINICAL RESEARCH CENTRE LIMITED  
Mulago Hospital Uganda Cancer Institute  
**UKRAINE**  
Institute of Blood Pathology and Transfusion Medicine of the Academy of Medical Sciences of Ukraine  
**UZBEKISTAN**  
The Ministry of Health of The Republic of Uzbekistan,The Republican Specialized Scientific-Practical Medical Center Of Hematology  
**VANUATU**  
Vila Central Hospital  
**VENEZUELA**  
Banco Municipal de Sangre  
**ZAMBIA**  
University Teaching Hospital Lusaka  
**ZIMBABWE**  
Parirenyatwa Hospital





*Yogiraj is a leukemia patient-advocate who is pictured here in Pune with Max team members. Along with his family, Yogiraj is highly active in providing support to other patients and organizing patient support group meetings. His favorite quote is “cancer didn’t bring me to my knees; it brought me to my feet.”*

66



## PATIENT PERSPECTIVE

“It is almost 10 years now since I became part of the Max Family. I am amazed by the power of kindhearted words and emotional support. Sounds quite simple, but these two things can take down any barrier in your life. In our life, whenever we come across any difficulty, advice from experienced people plays a key role in overcoming that situation.”

**Yogiraj from Pune, India**



themaxfoundation.org | 425-778-8660  
1416 NW 46th Street, Ste 105, #146  
Seattle, WA 98107

 @themaxfoundation  
 @themaxfoundation

 @TheMaxFndn  
 The Max Foundation